

BISAN ERP NON - GOVERNMENTAL ORGANIZATIONS



The system provides the ultimate financial management solution for NGOs through a dynamic, scalable and reliable ERP for budgeting requirements and accurate reporting and management of fund accounting, revenues, expenditure allocation and tracking per project, category, activity, cost center or any defined component. Working closely with NGOs and partnering with funders, provided us with full understanding of the reporting requirements for both parties.

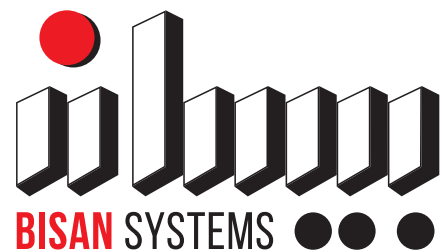


BISAN SYSTEMS LTD.
BATN EL HAWA STREET
P. O. BOX 530
RAMALLAH, PALESTINE

TEL: +970 2 298 5941
FAX +970 2 298 5942

JERUSALEM: +972 2 627 7196
JAWWAL: +970 599 677 904
OOREDOO: +970 562 900 020
JORDAN: +960 6 400 8017

USA: +1 617 902 2261
WHATSAPP +970599677904
info@bisan.com



O U R P U R P O S E

**WHEREVER WE GO,
WE IMPROVE
MANAGEMENT
DECISION MAKING.**

WHY BISAN?

BISAN ERP GENERAL FEATURES

BISAN ERP FINANCIAL FUNCTIONS

Financial Management

Sales & Marketing Management

BISAN ERP MODULES

Branch Management

Workflow & Electronic Transaction Approval

Payroll & Attendance

Human Resources Management & HR Portal

Financial Budget

Fixed Assets Management

Sales Budget & Inventory Module (when
Applicable)

Online/Offline Point of Sale (POS)

BISAN CYBERSECURITY

A GLIMPSE AT OUR PARTNERS

COMPARISON

35+ YEARS OF EXCELLENCE

WHY BISAN?

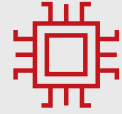
A fully integrated ERP solution serving the current and future needs of various sectors.

12,000+

Using Bisian Solutions



Available Anytime...
Anywhere



Zero Investment
in Hardware



A Modular Seamlessly
Integrated System with a
Single Point of Entry



Adaptable to your
own Business and
Industry Needs



100% Secure Access to
Real Time Information



International Market
Presence



Licensed in Many
Countries



Continuous Upgrades
at No Additional Cost



Cloud Application



Redundant Sites



Multi-layer Security



Fast and Comprehensive
Implementation



365 Days Support
Availability



An ERP Specifically
Designed to Meet
Today's Challenges



Available in Eight
Languages



Optimized Decision Making



Reliable

BISAN ERP GENERAL FEATURES

Bisan ERP is continuously upgraded with enhancements and new features to improve efficiency and provide higher accuracy.



TRULY MULTILINGUAL SYSTEM

A unique multilingual implementation providing the user the option to switch between desired languages at any given time during a session. An enhanced capability that allows entering sales vouchers in a certain language and printing it in another.



SPLIT VIEWS

A feature to split the view to multiple screens of the open tabs of files, transactions or reports in the system.



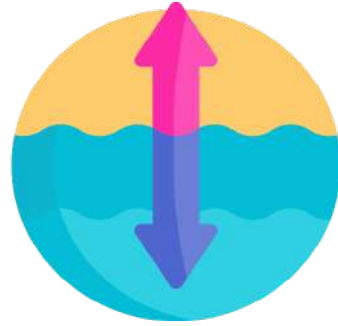
CLOUD ERP

The main screen is designed to clearly differentiate the application from the browser. The system supports all internet and intranet functionalities. The system is accessible from any internet connection, providing high data security.



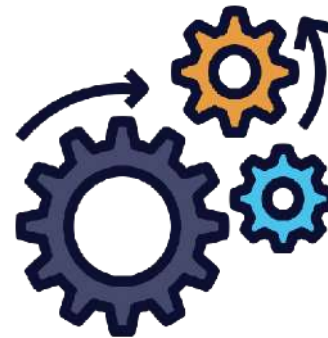
USER-FRIENDLY

The system provides user-friendly menus and graphics, a capability to hide, show and move columns around to customize screens per user. The menus and windows are designed in groups that deal with different cycles of accounting and management titles.



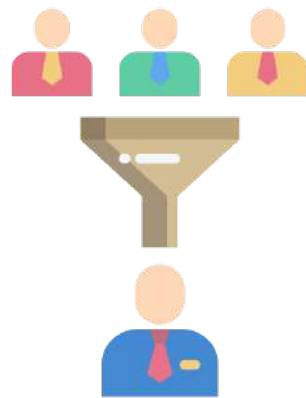
DRILL DOWN FUNCTIONALITY

A complete drill down functionality showing all details of each transaction on every report.



SEGMENTED ACCOUNTS

According to the type of your institution, whether manufacturing or service oriented, you could tailor accounting segments like departments, Cost Centers, and Projects to cope with management requirements of posting accounting entries and reporting.



FILTERING CAPABILITIES

Capability to filter tables by excluding or including any criteria.



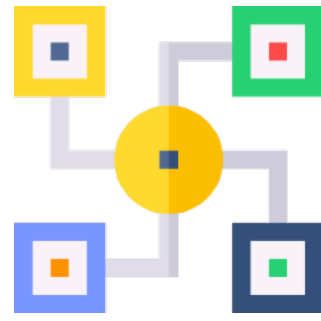
MACRO RECORDER

A tool to record recurring transactions for higher efficiency and productivity.



SMS INTEGRATION

Capability to send automated SMS notifications directly from the system per set configurable criteria for the accounts payable, accounts receivable, transactions and customer balances.



FULLY INTEGRATED MODULES

The package is fully integrated where all the data is entered through conventional vouchers directly on the screen. The system will eliminate the use of all paperwork whereby all transactions are entered once and automatically posted to corresponding modules, accounts and files.



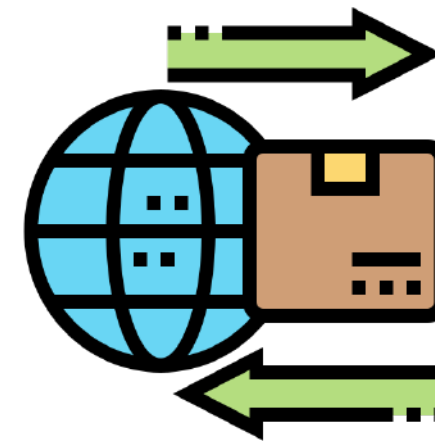
ADVANCED SEARCH FUNCTIONALITY

A unique detailed search mechanism which enables search in any given database, regardless of its size by searching through keywords or any other requested field. The search utilizes the Soundex algorithm that is especially handy for Arabic keyword searches.



REPORTS EXPORT

Capability to export all generated reports to Excel, JSON, XML, Text and HTML files, which can be opened by any other spreadsheet or word processing software.



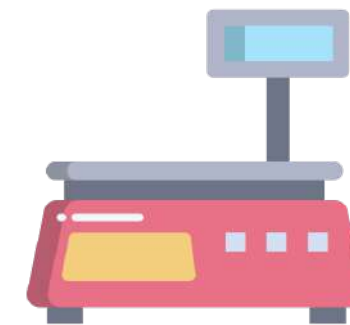
DATA IMPORT

Capability to import tables and lists from Excel, XML & Text with the appropriate account mapping and fields.



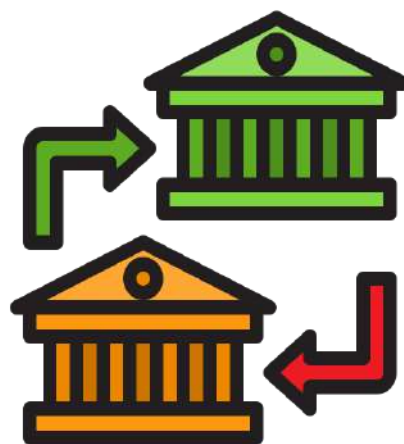
DOCUMENT ATTACHMENT

Ability to attach any file type with the related record or voucher, such as attaching purchase or expense invoices with related payment or journal voucher or attaching item picture with item file or for catalog view.



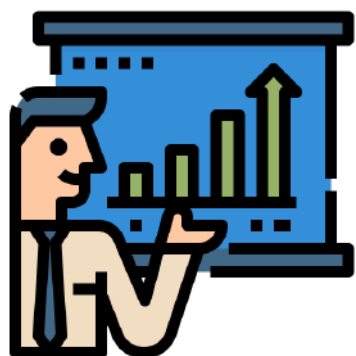
INTEGRATION WITH PERIPHERALS

Full integration with peripherals such as check readers and scanners, bar code readers, scales, document scanners and others.



BANK TRANSFER FORMS

User-defined HTML bank transfer forms printed directly from the payment vouchers.



MULTIPLE YEAR REPORTING

A full reporting capability per different periods and years allowing for multiple years reporting, overlapping years and cumulative periods.



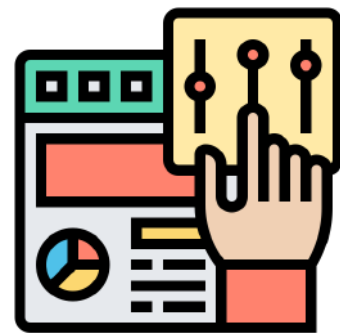
BARCODE READING & PRINTING

Integration with barcode readers for easy inventory taking and adding items in an invoice, in addition, to direct barcode printing for labels.



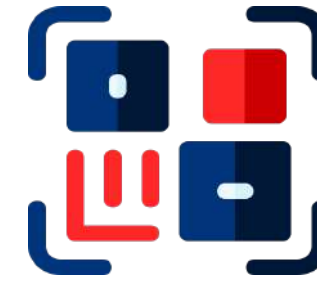
EMAIL INTEGRATION

Full integration with email systems, where single vouchers, such as purchase orders, invoices or receipts, could be sent. Also, bulk actions, such as pay slips or statements of accounts, are sent in PDF format as attachments to the e-mail and all transactions are logged and stored in the system for review.



CUSTOMIZED VIEWS

User customized views for all tables, to set preferences for certain criteria and they can be saved for future retrieval.



QR CODE FOR DELIVERY LOCATION

The ability to print a QR code on store issues and invoices indicating the contact's location for accurate and error free delivery.



USER PREFERENCES

An ability to define each user's language preference, setting default fields in transactions and customized views for tables.



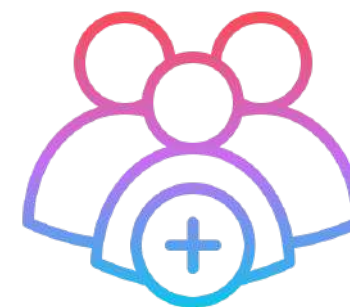
RECORD CLONING

To accelerate the data entry and to save time and effort, you can clone any record available, whether it is a file or a voucher. Thus, providing a powerful feature for using any available voucher as a template, rather than building a separate template per voucher.



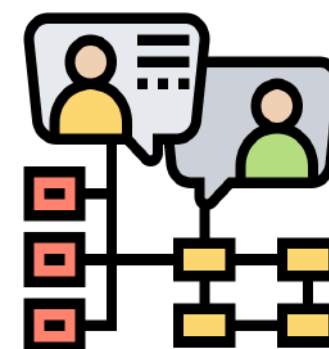
CHECK READING & PRINTING

Fully user-defined easy-to-use setup per bank account for check dimensions and available fields for any check format.



MULTIPLE USERS DEFINITION

Multiple users are each defined with assigned access rights up to the field level.



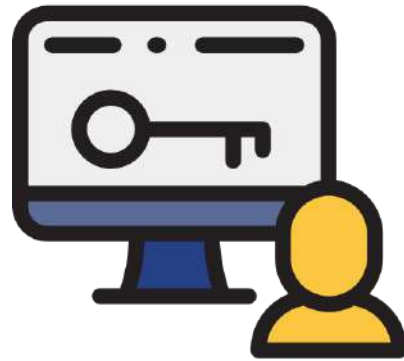
CONTACT LANGUAGE PREFERENCE

Regardless of the default language the user is working with, a language preference for each contact may be defined; for sending invoices and SMS messages in a preferred different language.



MULTI-TAB INTERFACE

The system allows the user to open different menus and tables at the same time, to add new records and modify existing ones without having to interrupt the transaction you are working on.



CUSTOMIZING USER SHORTCUTS & ICONS

The system provides consistent use of function keys and icons that are clearly defined. In addition, it provides a customized definition of shortcuts and icons per user.



DASHBOARD & WIDGETS

A dashboard including various widgets for easy reading of data and reports in the system.



NOTIFICATION ALERTS

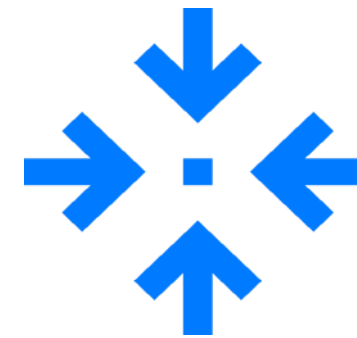
A feature to automatically generate customizable alerts from the system. These alerts include SMS messages, email notifications or pop-up messages on the screen.

ADDITIONAL FEATURES



FULL AUDIT TRAIL

Every change in the system is audited on the field level, giving authorized users access to view all historical changes of any piece of data with who/what/where/and when information.



API DATA EXCHANGE

A capability to integrate with third party systems by utilizing the API data exchange module, thus, saving time and effort in data entry and ensuring accuracy.

BISAN ERP FINANCIAL FUNCTIONS

FINANCIAL MANAGEMENT

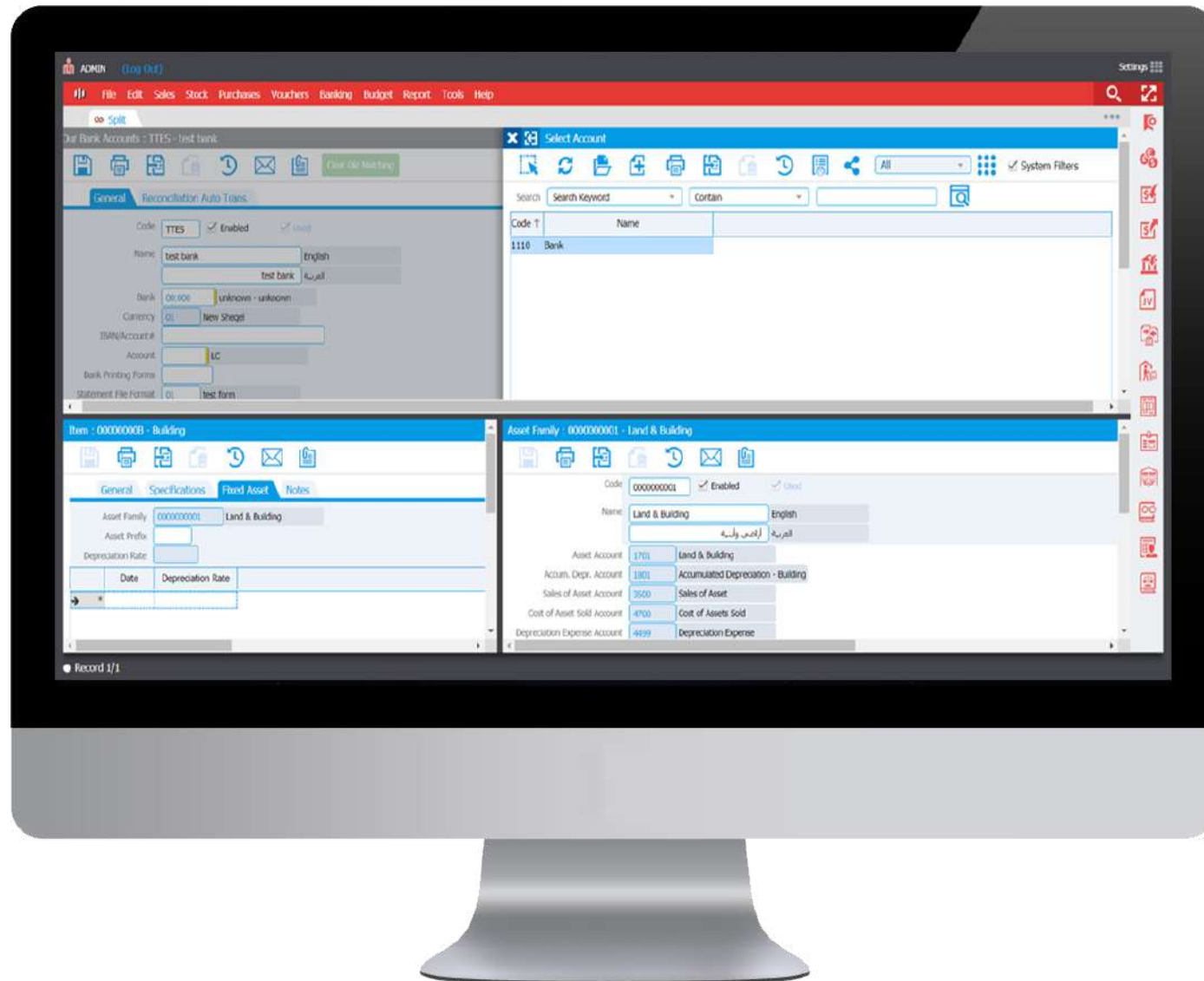
GENERAL LEDGER (GL)

A flexible chart of accounts with a multi-level file structure and multi-level segments; capturing all vouchers and financial transactions and providing flexible reporting capabilities for any specified period, including detailed information and a drill down functionality. A double-entry voucher system that is fully integrated to maintain all your financial entries in an accounting ledger.

ACCOUNTS RECEIVABLE & ACCOUNTS PAYABLE

A fully real time integrated module with the GL. It includes multi-currency accounts management with consolidated reports; for easy accurate comprehensive view for all customers and vendors balances, in addition, to detailed transactions with full analysis of your customers' and supplier's activities such as aging, periodic collections and maximum credit reports.





MULTI-LEVEL FILE STRUCTURE

Providing grouping on any set of files whether general ledger accounts, A/R, A/P, assets, cost centers to simplify data entry and provide flexible comprehensive reporting options.

VAT SETTLEMENT & INVOICE BANK

Multi-level VAT rate definition fully integrated with vouchers, giving a fully automated calculation and management for taxable transactions providing full reporting and VAT settlement processing including detailed invoice bank report.

PENDING INVENTORY HANDLING & REPORTING

User-defined properties for valuation handling and reporting of pending inventory in store issues and store receipts vouchers, when extracting the financial reports.

The image shows a computer monitor displaying a financial software interface. The interface is divided into three main sections, each showing a table of financial data for the period 01/01/2021 - 31/12/2021.

Cash Flow (31/12/2021)

Description	Account	Account Name	Amount (NIS)	Subtotal (NIS)	Total (NIS)
Cash Flows from Operating Activities					
Cash Received from Customers					
Sales	3700	Sales	568.00	568.00	
Sales Discount	3700	Sales Discount	2.00	2.00	

Balance Sheet (31/12/2021)

Description	Account	Account Name	Amount (NIS)	Subtotal (NIS)	Total (NIS)
Assets					
Current Assets					
Cash	1110	Cash	1,781,899.00	1,781,899.00	
Bank	1190	LC	-500.00		
Post-dated Ch.	1110	Bank	-52,510.00	-52,510.00	

Income Statement (01/01/2021 - 31/12/2021)

Description	Account	Account Name	Amount (NIS)	Subtotal (NIS)	Total (NIS)
Sales Revenues					
Sales	3700	Sales	200.00		
Sales	3700	Sales	368.00	568.00	
Sales Discount	3700	Sales Discount	-2.00	-2.00	
Net Sales					566.00
Cost Of Goods Sold					

FINANCIAL STATEMENTS

Comprehensive financial reports for any period of time including (DD-MM-YY TO DD-MM-YY), giving flexibility for cross period and multiyear reporting, in addition, to providing currency translation for extracting the reports in any desired currency defined in the system.

FULL BANKING & CHECKS MANAGEMENT

Management for multiple bank accounts and multiple currencies, full management and tracking for received and issued checks and bank transfers with full details, including due dates and endorsed checks. This provides an easy automated bank reconciliation process, a cash flow forecast for each bank account and the capability to track the full check cycle from when it is written till it is cashed or canceled.

The image shows a laptop displaying a financial software interface. The interface is divided into three main sections, each showing a table of financial data.

Bank Check (Enabled)

Code	Due Date	Currency	Amount	Contact	Contact Name	Check Number	Status	Salesman	Salesman Emp. Name	Locked By	Account	Currency
0000102	31/12/2004	01	100.00	0000010	Nasser	25					2340	01
0000001	03/02/2019	01	2,500.00	0000213	رمسة النماحي	2547	Collected	002	Salah		1110	01
0000020	05/02/2019	01	4,000.00	0000213	رمسة النماحي	00001451					2390	01
0000015	09/02/2019	01	6,000.00	0000113	Birzeit University	2548	Returned	003	Nasser		1230	01
0000021	11/02/2019	01	2,000.00	0000213	رمسة النماحي	00001255					2390	01

Banks & Branches List (Enabled)

Code	Bank	Bank Branch	Full Name
00	00		unknown
00.000	00	000	unknown - unknown
04	04		Yahar
04.007	04	007	Yahar - Almalha
04.030	04	030	Yahar - Walston Branch - hickon
04.031	04	031	Yahar - Azriel Branch

Our Bank Accounts (Enabled)

Code	T	Name	Bank	Currency	IBAN/Account#	Account
0001		JOHNY BANK	43	01	PS23 ALDN 0475 0162 7900 4290 1000 0	1110
0002		بنك فلسطين	01	01	PS55 JCBA 6505 3403 7940 0200 1300 0	1110
0003		البنك العربي - وهران	40	06	02	1110
0004		بنك فلسطين	43	01	405060	
0005		البنك العربي - حيدر	40	06	01	54121
0006		بنك فلسطين - حيدر	00	00	02	



CHECK PRINTING & BANK TRANSFER FORMS

Fully user-defined ease to use setup per bank account for checks dimensions and available fields for any available check format; in addition, to user-defined HTML bank transfer forms.

AUTOMATIC DEPRECIATION CALCULATIONS

Fully integrated with financial reports providing detailed depreciation schedules per asset or group of assets at any period of time with management of assets, new additions and discarding. In addition, to providing detailed managerial reports for assets related expenses.

MULTIPLE SEGMENTS/COST CENTERS

Featuring unlimited number of account segments of any size, with sub ledgers giving you the flexibility of tracking transactions to the smallest detail. Clients could tailor segmented accounts to cope with management requirements, was it per department, project, cost center, currency or other.

PREPAID & ACCRUED EXPENSES

For accurate financial and managerial reporting Bisan ERP provides automated calculation and management for accrued and prepaid expenses with easy-to-use user-defined setup.



MULTI-CURRENCY MANAGEMENT

Full multi-currency management with user-defined currencies and currency rates tracking, ability to use multiple currencies per voucher, with automated currency conversion and currency variance calculations vouchers allowing the management of as many currencies as needed, keeping track of account balances, customer statements and financial reports in the standard currency, as well as, any other defined currency. The system provides a multi-currency reporting and value translation for all available reports.



SALES & MARKETING MANAGEMENT

CUSTOMERS

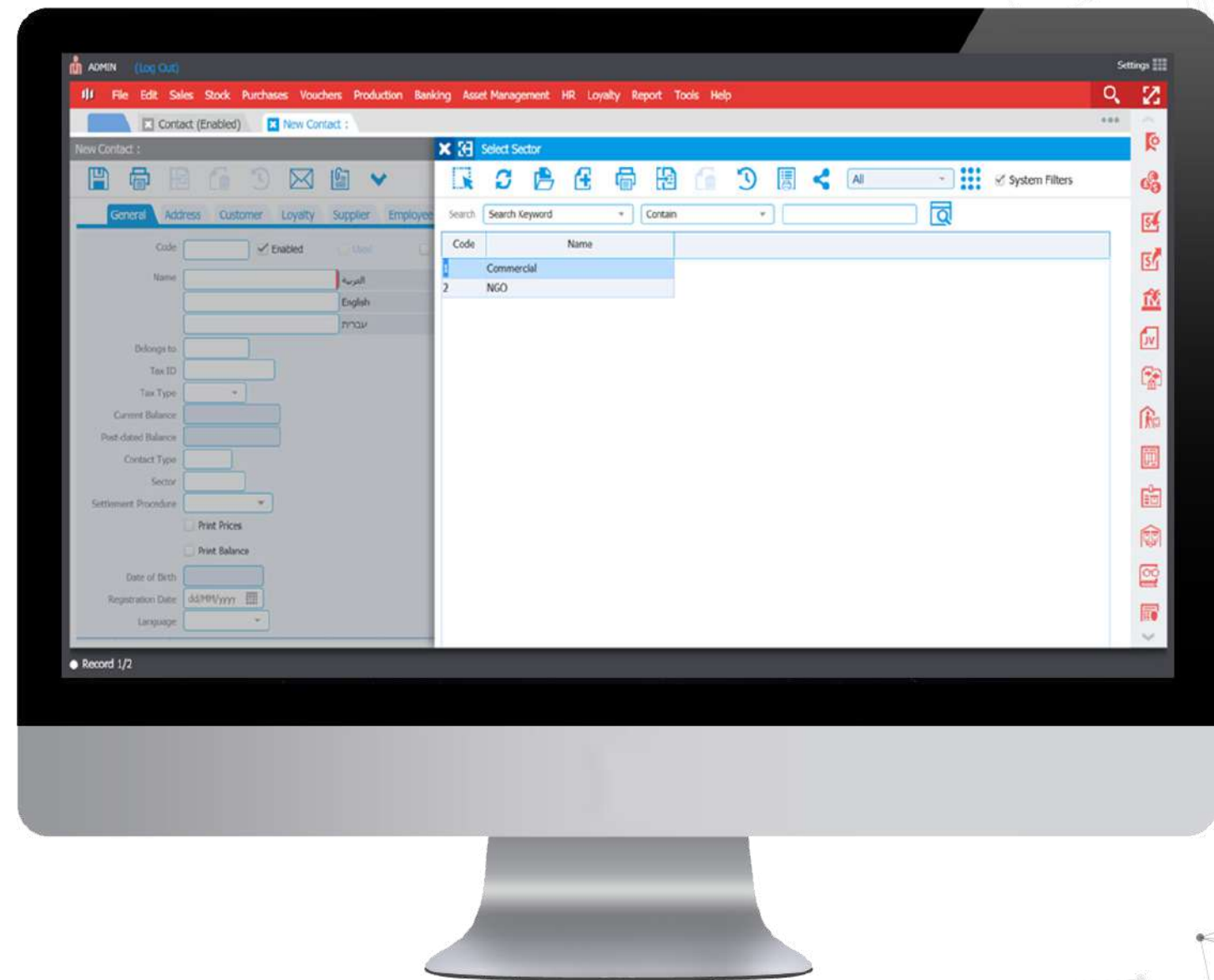
The system provides a mini-CRM system with full customer information, in addition to multi-level grouping file structure for tracking and roll up reporting to parent company level.

CUSTOMER SEGMENTATION

The system provides segments for categorizing customers to help extract data for sectors types or any required grouping desired for managerial reporting and market analysis.

SALES VOUCHER INTEGRATION

Full integration and workflow between all sales vouchers and proforma invoices, sales orders, store issue vouchers and invoices. This simplifies processing and tracking quantities and prices from one document to another, including partial quantities; eliminating double data entry and providing full traceability per item for accurate processing and control.



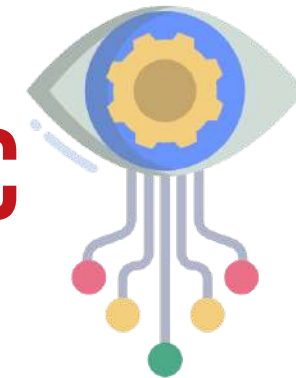
BISAN ERP MODULES

BRANCH MANAGEMENT



The system allows an unlimited number of branches to be defined in the system, with grouping options for branch management and financial reporting.

WORKFLOW & ELECTRONIC TRANSACTION APPROVAL



To save time and ensure accuracy, the system offers a multi-level electronic approval structure per document. Thus, providing a paperless, fully tracked, automated and audited transaction processing based on your own set policies and procedures.

PAYROLL & ATTENDANCE



The Payroll and Attendance module fully supports multiple countries Payroll Deduction Regulations, income tax and other local tax regulations. It is flexible to support different methods and formulas for calculating payroll, allowances and deductions. A payroll form can be created to take into account calculation method, payment period, payment type and the design of printout pay slip for each group of employees. The system allows the user to create and print payroll slips for each employee, and offers easy and flexible treatment of employee advances and loans. Additionally, the system can deal with attendance transactions either by import from the attendance clock or through manual entry.



Employee File: Full name, employment type, ID number, address, city, phone, fax, mobile, email, job title, education, gender, bank account, marital status, number of children, card number, general notes and employees' start dates and end dates.

Payroll Calculations Variables: User-defined infinite number of variables that will be used in setting different payroll calculation formulas. This approach provides a flexible powerful tool similar to building formulas in spreadsheets.

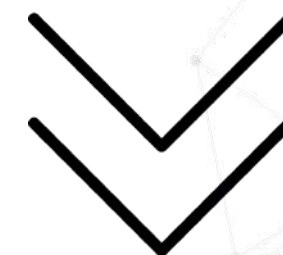
Salaries Calculations: The system provides different methods for salaries calculations, hourly rates, over time and attendance hours, multiple shifts and fixed periodic salaries (daily, weekly, bi-weekly, monthly, quarterly, semi-annually and annually).

Deductions & Allowances: User-defined calculation methods for deductions and additions to salaries. The system is ready for implementing the SSC announced instructions and regulations.

Salaries Yearly Increases Percent or Scale: Multiple methods for defining yearly salary increases per employee groups or individual employees as a fixed percent rate or based on defined scales, such as; a combination of grade and step matrix.

Payroll Tax Forms: An automatically generated ready to submit detailed payroll tax form as required by the PNA tax authorities and complying with updated tax laws.

Pay Slips: Fully customizable pay-slips to include any information available in the employee file and any variable or calculation in the payroll. Different pay slips formats and information fields could be defined based on employee groups and sub groups.





Employee Group: The system allows assigning employees to different groups for time saving and easy setup.

Working Schedule: Flexible planned working schedule per employee group including start and end time, breaks, handling of extra and shortage time from schedule. In addition to the option of including the break within or subtracting it from the regular working hours. The working schedule is built in an easy logical flow with the ability of assigning the whole year in a weekly format or handling specific calendar days. The system provides the option of adding a rule where OUT actions are auto recorded in case there is an unclosed day.

Attendance Rules: Multiple set of rules for handling attendance calculations such as maximum and minimum daily working hours, margins for early and late IN minutes, margins for early and late OUT minutes.

Vacations Schedule: Setting employees vacations and providing detailed reports per employee in addition to vacation balance calculations.

Absence Types: Defining an unlimited number of absence types such as delays/early leaves, annual vacation, holidays, closures, illness, maternity...etc. with tracking and reporting on each type. The system enables different ways of dealing with attendance delays/early departures such as reduction from vacation balance, deduction from salary...etc.



HUMAN RESOURCES MANAGEMENT & HR PORTAL



A full HR management module that includes the organization structure, employee profile, absence management, and performance evaluation in addition to a self-service portal. This module fully integrates with and completes the Payroll & Attendance module. The HR administrator is responsible for setting up the employee profiles and information whereby each employee may access the module and perform needed actions through a portal or directly through the system.

Organization Structure: A submodule to identify how the company is organized, what divisions it has, what departments these divisions contain, and what are the defined positions in these departments. Divisions may be distributed horizontally (the common case) across the organization hierarchy or through a vertical alignment. The divisions and departments entities provide flexibility to allow room for any future organization restructuring.

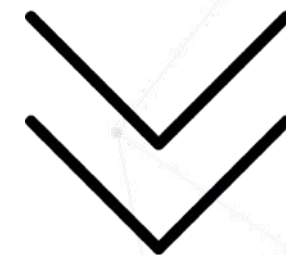
Salary Range: A salary range may be added to positions. Thus, providing more control, where each employee is directly assigned a position. The HR administrator may define groups and link employees to these groups depending on the organization's needs. The main defined entities in this module are: division, department, position, employee, position history, group and branch.

Employee Profile: A profile that captures all the needed data of the employees, including basic information, dependents list, personnel, insurance, education, certificates, previous work experience, in-house experience, acquired training, and bank accounts information. Salary information, history, allowances and deductions are also defined. Once a profile is deactivated, it can be reactivated in case of re-employment.



Absence Management: A submodule for leave management, for vacations, holidays, and other leaves such as annual, sick, educational, training, breastfeeding, and others as defined per the organization's policies. The organization can set its own rules to check the eligibility and scope of the vacation, as well as, designing a workflow for approvals for certain leaves, thus enabling email notification for vacation requests.

Employees may access the self-service portal to apply for leaves and to check their yearly vacation balance, as well as, leave approvals or rejections.





Performance Evaluation: This module manages the performance evaluation across the organization as a whole, it can be triggered to start or to end at any time in the year whenever the organization sees it is suitable for its business operations.

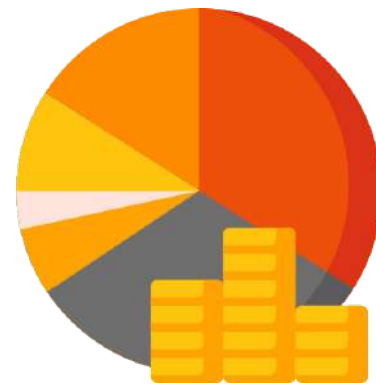
The performance evaluation is based on creating evaluation templates for each division or department or group or specific position based on the organization's needs. Defined parameters and KPIs are set for calculating evaluation range and statuses and may be linked to salary raises for the next payroll cycle.

Achievements can be documented under three types; reward, recognition or promotion. Also, notices can be recorded in the employee file as a notice or warning. Managers may view all evaluations and their status for pending and completed ones through the self-service portal and may be edited until they are finally approved by the designated approver.

Recruitment: the system provides a complete solution for the recruitment process. Once a vacancy position is defined and the recruitment stages are set, the user can track each applicant's progress and the status of each vacancy in a very robust manner, until reaching the conclusion of either deactivating the application or recruiting the applicant which creates a comprehensive new employee file.



Self-service HR Portal: In order to have a functional HR module; an employee portal is essentially needed. The portal enables the employees to view their information, and execute certain actions such as apply for a vacation, approve employee-related requests, and fill the performance evaluation form. It is a stand-alone product with a simple web interface that connects directly to the HR module and Bisan ERP.



FINANCIAL BUDGET

The Financial Budget module is seamlessly integrated with the GL, the purchasing vouchers and other modules providing real time reporting and budget control.

Multi Year & Period Budgets: The system allows setting up multiple year budgets with transaction and control across fiscal years. The system allows creating multiple budgets per period for control purposes and reporting.

Flexible Structure: Flexible budget structure based on any combination of defined segments.

Budget Vouchers: Budget setup transactions are entered through special budget vouchers, keeping track of all additions, amendments and variations on any budget.

Flexible Dates & Controls: A flexible time span for each budget created; allowing budgets to be allocated per year, quarter, month, or a range of days; including non-consistent time intervals within the same budget. Moreover, budgets could be defined as, controlled budgets not allowing users to exceed set amounts or uncontrolled budgets used for reporting purposes.

Reporting: Various numbers of reports, including: roll up accounts and segments, budgeted vs. actual expenditure, budget period matrix for expenses and revenues for every segment and every year.



FIXED ASSETS MANAGEMENT



The Fixed Assets Management module is designed to manage the entire life-cycle of fixed assets, including: purchase of assets, asset location and custody, asset count, expired assets, assets retirement and sale of assets. It includes multiple asset accounts, multiple depreciation accounts, and multiple depreciation expense accounts. Assets are grouped by type, category, classification or others. The module is fully integrated with items and warehouse management. It provides automatic calculation and posting of depreciation expenses which could be set periodically and provides full fixed assets disposal management; in addition to detailed reporting.

Asset Purchase: Managed by conventional purchase vouchers eliminating double data entry and errors. Each fixed asset entered is automatically assigned a unique asset tag "serial number," in addition to the supplier serial number (if available), the asset tag could be printed as a barcode label directly from the system and attached to the asset.

Locations: Flexible user-defined location structure that could track multiple geographic areas and buildings down to the room level.

Custody Management: In addition, to asset tracking by location, assets could be managed by custody. Asset movement from location and/or custody are managed by serially numbered vouchers, keeping historical movements that could be easily tracked and audited at any point of time. User-friendly tools for automatic loading and bulk movement of assets from one location to another or to multiple locations.

Fixed Assets Count: Special count vouchers with user-defined settings based on location or building are defined for asset count. Count vouchers are serially numbered keeping track of historical transactions. Data entry is flexible to use barcode scanners by scanning either the asset tags or the supplier's serial numbers. Reporting contains assets per location, in addition, to comparing assets per location with counted assets.

Assets Disposal Management: Management of sold, donated, lost or used as spare parts of fixed assets with full related financial transactions.



SALES BUDGET & INVENTORY MODULE (WHEN APPLICABLE)



Multi Year & Period Budgets: The system allows setting up multiple year sales budgets with transactions and monitoring across fiscal years. Furthermore, the system allows creating multiple sales budgets with different configuration setup per period for reporting. Budget Vouchers: Sales budget setup transactions are entered through special budget vouchers, keeping track of all additions, amendments and variations on any sales budget.

Flexible Dates: A flexible time span for each budget created; allowing budgets to be allocated per year, quarter, month, or a range of days; including non-consistent time intervals within the same budget.

Reporting: Various reports, including; roll up sales & segments, budgeted vs actual sales.

Multiple Warehouse Management: The system allows an unlimited number of warehouses to be defined in the system, with grouping options for multibranch inventory management and evaluation.

Ending Inventory Evaluation: Automated real time FIFO, by serial number, standard or fixed ending inventory evaluation by item at any desired time; taking into account branches and warehouse grouping.

Inventory & Location Management: The system provides the ability to assign a bin number or location per warehouse for each item with maximum, minimum and reorder quantities to facilitate locating items, managing available quantities per shelf and ease of the inventory taking process.

Multiple Unit Tracking Per Item: An innovative approach for multiple unit management for items. Each defined item could have more than one unit of measurement with automatic conversion simplifying data entry transactions and providing comprehensive reporting capabilities per any desired item unit.

Serial/Batch Expiry Date Tracking: Tracking of each item with the specific serial number or batch (shelf-life expiry dates) for enhancing the management of items under warranty, recalling items or track expiry dates for perishable items; includes a complete set of reports. Keep track of each item according to your preferences and procedure using fully customizable alerts and notifications in the system.





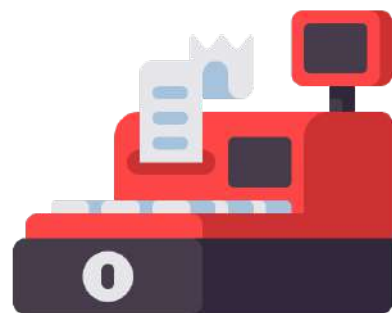
Height, Width & Length Item Management: Full management for items sold by area or volume with unlimited dimension options for the same item such as glass, stone and marble, where the item is sold by count in different dimensions while priced by area or volume, this option provides the ultimate management tool for such items by tracking only one item unit for data processing and providing summary reports by area or volume and comprehensive reports with infinite combinations of different dimensions per item.

Inventory & Location Management: The system provides the ability to assign a bin number or location per warehouse for each item with maximum, minimum and reorder quantities to facilitate locating items, managing available quantities per shelf and ease of the inventory taking process.

Barcode Management: Ability to assign part numbers and barcodes per item unit for an enhanced inventory management system providing an easy user-defined label printing tool to print item part numbers, serial numbers or batches as barcodes. This feature is a practical cost-effective solution.

Item Segmentation & Reporting: The system provides a multi-level segmentation and grouping per item providing comprehensive purchases and managerial reporting by quantities and values by items, brands, categories, classifications...etc.

Purchases Reports: Comprehensive analytical reporting for quantities and values; providing deep data with multi-currency, cross-period, periodic and comparative reports per periods, areas per item or supplier.

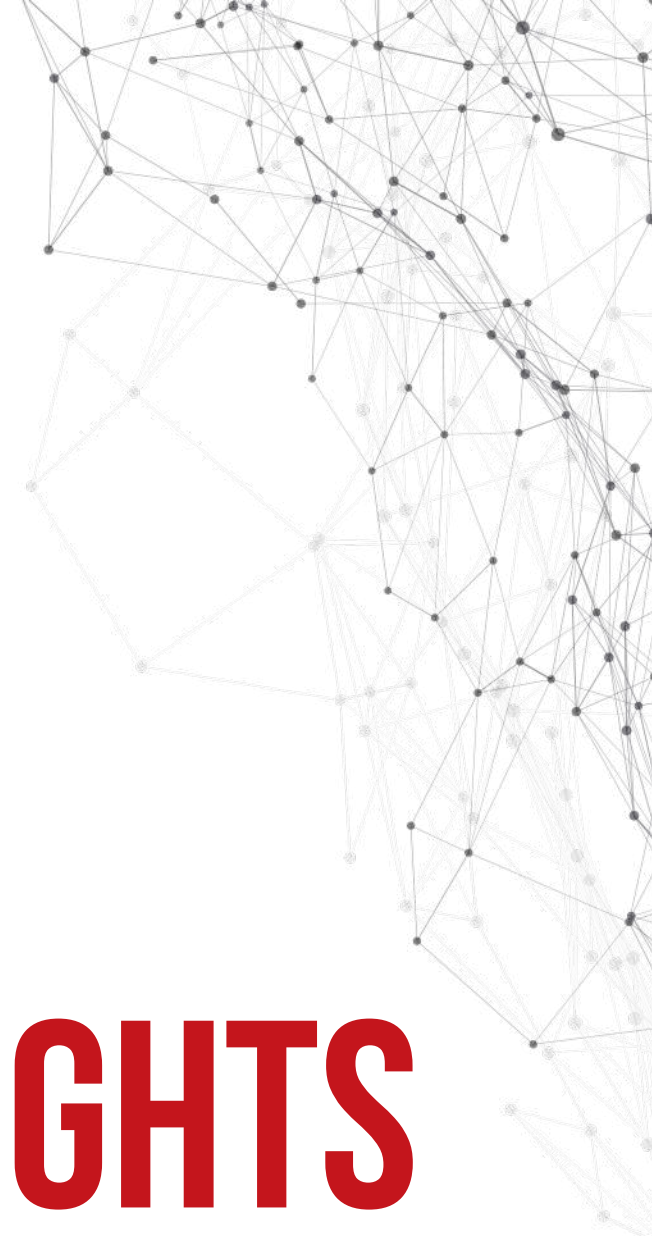


ONLINE/OFFLINE POINT OF SALE (POS)

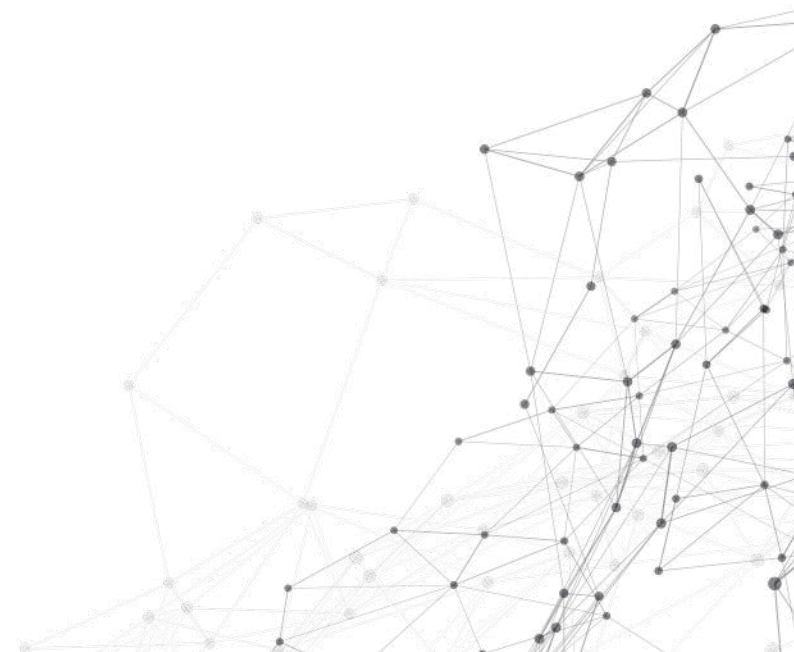
A user-friendly Point of Sale module for retail and cash sales, easy-to-use setup and management. It is seamlessly fully integrated with the Bisan ERP NGO Edition utilizing all back-office system features, reporting and modules.



- Online real time integration with back office with internet connection.
- Works offline when connection is lost.
- Supports multiple POS stations.
- Supports multiple price lists and station and customer price list definition.
- Supports touch screens with catalog view and item grouping.
- Supports campaigns offers and schemes by showing a list of all active campaigns for the designated period.
- Quick access to define fast moving items.
- One function key for printing POS invoices on slip printers, open cash drawer and post transactions.
- Easy search and item lookup.
- Cash and on account sales.
- Supports to and from money transfers.
- Full integration with peripherals: slip printers, cash drawer, barcode scanners and scales barcodes.
- Direct impact on inventory with sales transactions.
- Full set of related sales and collection reports including comparative hourly sales.
- Item barcode scanning.
- Supports multi-currency customer payments and change amounts.
- Multi-currency item price lists.
- Real time integration with warehouse and inventory management.
- Supports defining a different warehouse for each POS.
- Supports defining a specific price list for each POS.
- Access rights for each POS to define available item groups.
- Supports adding order variations to items on POS invoice/receipt.
- Supports adding delivery charges and delivery instructions.
- Supports holding invoices when holding items for customers.
- Shifts start/end with summary report of cash at shift end.
- Handles sales returns.
- User-friendly interface for adding customers and contact information for gathering a customers' database.



CYBERSECURITY & ACCESS RIGHTS





ACCESS RIGHTS SECURITY

Users are organized in a tree fashion similar to that of the company's administrative tree, each user can be assigned specific access rights on any option, module and functionality in the system.



THIRD PARTY LOGIN OPTIONS

A feature that allows users to incorporate verified third-party applications as a login option to the ERP system.



PASSWORD SECURITY

Controls for assigning password strength and requests to change it periodically.



TWO-FACTOR AUTHENTICATION

A two-factor authentication for additional optional security that sends an SMS to the mobile number defined in the user's file. Users should enter the code sent in SMS to verify login and it can be defined to verify every login or only when trying to log in from new stations.



LOGIN SCHEDULE

Definable time schedules to permit users to log in to the system at specific schedules or times.





ADVANCED SECURITY

Permitting authorized users' access in permissible fields, sub-fields by defining criteria and rules per voucher or record field providing a high level of user access control.



STATION LOGIN SECURITY

In addition to usernames and passwords, a security option is defined for permitting specific stations to access the system.



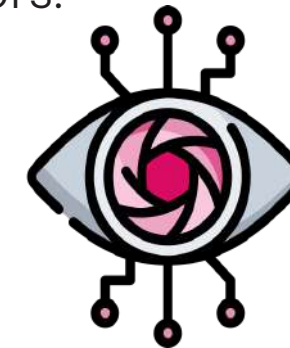
DOCUMENT PRINTING

User-defined document printing options allowing or denying access to print and post vouchers.



CONTROL DATES

User-defined set of controls for data entry security and control, such as: maximum and minimum allowed document dates from system date; per bank account lock date for reconciled bank statements; data entries lock date for last audited or reporting period. These controls guarantee unintentional data entry that will affect audited or submitted reports.



ELECTRONIC SIGNATURES

Assigning required signatures for approvals per voucher based on criteria and rules for fields such as voucher amount, branch, department and/or supplier.

A GLIMPSE AT OUR PARTNERS



مركز إبداع المعلم
Teacher Creativity Center



medico internationa



مركز السرايا لخدمة المجتمع
Al Saraya Center for Community Services

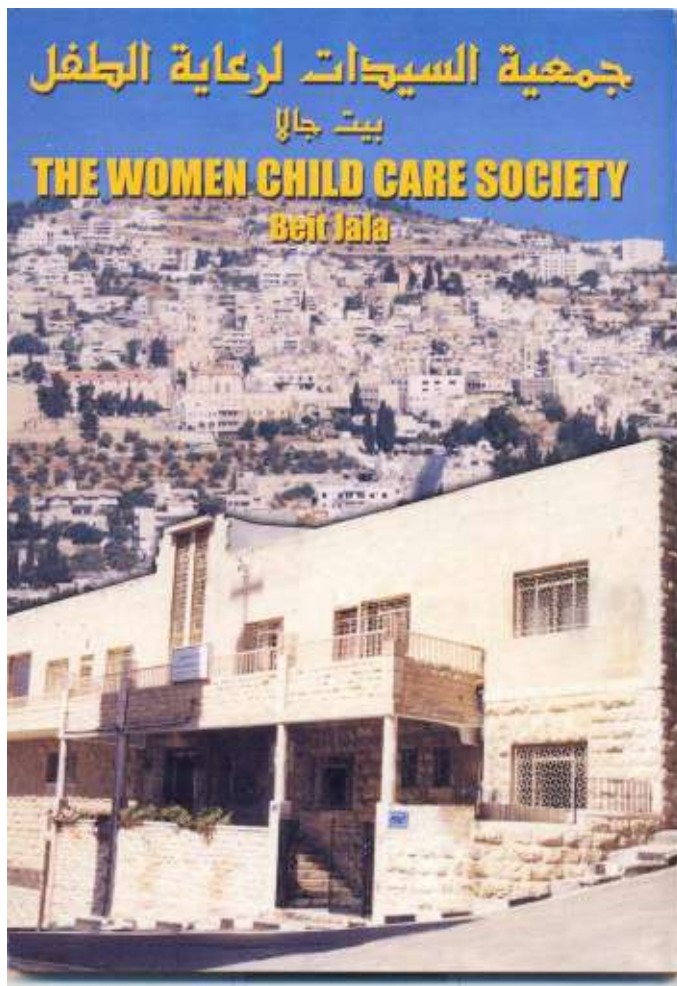
Agbet Alsaraya, the Old City, Jerusalem - Palestine
Tel: 02-6263374, Phone: 02-6260017
PO Box: 21903 Jerusalem 97000
admin@alSaraya-center.org, www.facebook.com/AlSarayaCenter



مؤسسة تطوير بيت لحم
Bethlehem Development Foundation



Partners for Sustainable Development
شركاء في التنمية المستدامة



جمعية السيدات لرعاية الطفل
بيت جالا
THE WOMEN CHILD CARE SOCIETY
Beit Jala



ALROWWAD



M A S



نُصِفِرُ شَجَرَ الحِكَايَةِ



AL BALAD THEATER



بديل
المركز الفلسطيني
لمصادر حقوق المواطنة واللاجئين
BADIL
Resource Center
for Palestinian Residency & Refugee Rights



Hurryyat
حريات

PRO VS. LITE COMPARISON

FEATURES

General Ledger
 Account Receivable & Account Payable
 Multi lingual
 Multi Currency
 Multi Currency reporting & values Translation
 Depreciation automatic calculations
 Financial Statements
 VAT Settlement
 Automatic Currency Variance
 Drill Down Functionality
 Single Point of Entry
 Contact Language Preferences
 Filtering Capabilities
 Reports Export to HTML Excel & Text
 Macro Recorder
 Multiple Year Reporting
 Access Rights security
 Station Login Security
 Password Security
 Control Dates
 Barcode Reading & Printing
 QR Code for location

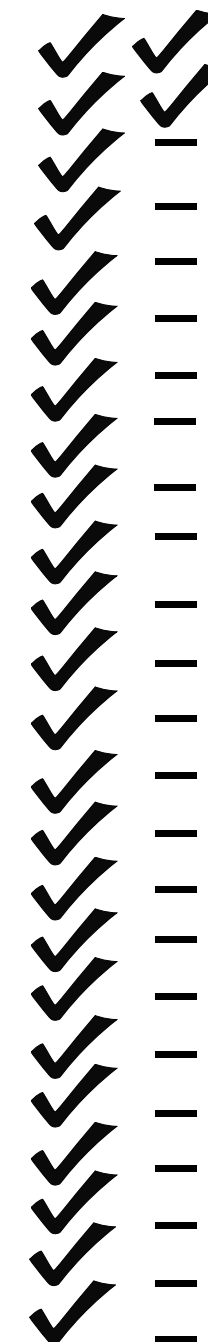
PRO vs. LITE



FEATURES

Login Schedule
 Electronic Signature Setup
 Checks Reading
 Checks Printing
 Automatic Bank Reconciliation
 Customized Views
 Email Integration
 SMS Integration
 User Preferences
 Advanced Security
 Bank Transfer Forms
 Advanced Search Functionality
 Data & Report Import
 Multiple Segments/ Cost Centers
 Multi-level File Structure
 Prepaid & Accrued Expenses
 Customers Segmentation
 Multiple Sale & Purchase Price Lists
 Periodic Sales Reports
 Item Segmentation & Reporting
 Auditor & Parent Company Codes
 Invoice Settlement
 Sector Specific Modules
 Project Management

PRO vs. LITE



ADDITIONAL MODULES

Serial/ Batch Lot Tracking
 Financial Budgeting
 Fixed Assets Management
 Workflow & Electronic Transaction Approval
 Production Management
 Payroll
 HR Portal
 Sales Performa Invoice
 Online & Offline Point Of Sale
 Mobile Sales Application
 Document Attachment
 Full Audit Trail
 Multi Branch Management
 Multi Company Consolidated Financial Report
 Number of Concurrent Users

PRO vs. LITE

✓	—
✓	—
✓	—
✓	—
✓	—
✓	—
✓	—
✓	—
✓	—
✓	—
✓	—
✓	—
✓	—
Multiple	1